

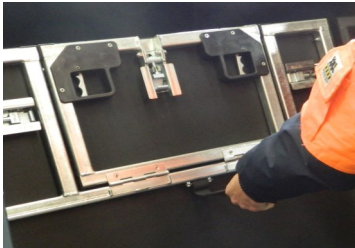


QUBIT Liquid

- ▶ Hot dipped galvanised base with 4 way entry
- ▶ Hot dipped galvanised folding gates
- ▶ Moulded food grade HDPE hinged lids
- ▶ Food grade HDPE in-fill panels, with screw-less retention.
- ▶ Smooth internal sides.
- ▶ Easy to operate toggle clamping.
- ▶ 1000 litre liquid configuration (subject to SG of product)
- ▶ Folding ratio of 3:1 to maximise transport and storage space
- ▶ Inter - stackable when full or empty.



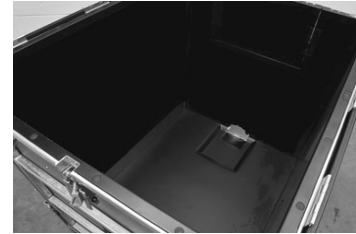
QUBIT Liquid



Ergonomic handles to position gates.



1000L liquid capacity subject to specific gravity of product.



Screw-less internal construction with sump.

PRODUCT SPECIFICATIONS	Metric	Imperial
External dimensions:	1200 x 1000 x 1210 mm	47.2 x 39.4 x 47.6 inches
Internal dimensions:	1100 x 905 x 1030 mm	43.3 x 35.6 x 40.5 inches
Capacity (Subject to SG):	1000 L	264 gallons (US)
Overall height (folded):	386 mm	15.2 inches
Weight:	140 kg	308 lbs.
Stacking - Static (Full):	4	
Stacking - Dynamic (Full):	2	
Stacking - Static (Folded):	12	
Stacking - Dynamic (Folded):	6	
Product Test Criteria:	ISTA 3H:2011	
Shipping 20' Standard	Erect : -	Folded: 54
Shipping 40' Standard	Erect : 21	Folded: 126
Shipping 40' HC	Erect : 23	Folded: 145



milfordibc.com